



**FOR IMMEDIATE RELEASE**

Media contact: Kaela Nelson

Phone: (916) 442-6802

Fax: (916) 442-2646

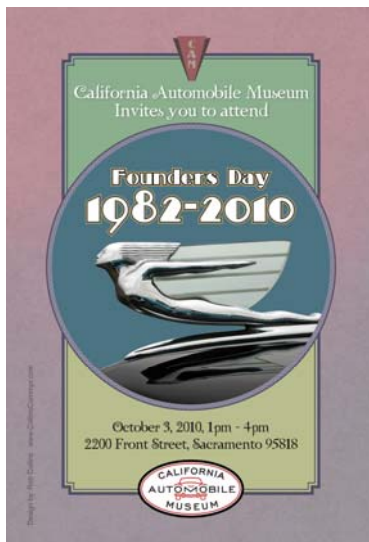
2200 Front Street

Sacramento, CA 95818

[pr@CalAutoMuseum.org](mailto:pr@CalAutoMuseum.org)

[www.CalAutoMuseum.org](http://www.CalAutoMuseum.org)

## California Automobile Museum Celebrates Its History with First-Ever Founders Day



**Sacramento, CA** --- On Sunday, October 3, the California Automobile Museum will celebrate its 28 year history in Sacramento with a special event honoring its founders and sharing with the public a bit of Sacramento history. "There was a great fear from those of us who were responsible for founding the Museum that the origin of the Museum would be lost, so this event is a way to reenact the joy of bringing a car museum to Sacramento," says founder Dick Ryder. "It is an honor and brings such satisfaction to be part of this event and the California Automobile Museum," states Ryder.

From 1pm - 4pm guests can enjoy Vic's Ice Cream, music, entertainment, and magnificent classic and antique cars. "We're excited about commemorating and celebrating the founding of our Charity in 1982, followed by the opening of the Museum in 1987," states Karen McClafflin, the Museum's Executive Director. "This event is a perfect time to renew the dedication to the Purposes of the California Vehicle Foundation that were defined by the founders nearly three decades ago."

A \$10 per person donation is requested (includes Museum admission). The Museum is located at 2200 Front Street, just south of Old Sacramento and north of Broadway. There is ample free parking available. For more information, visit [www.CalAutoMuseum.org](http://www.CalAutoMuseum.org) or call (916) 442-6802.

**About the California Automobile Museum:** The California Automobile Museum, formerly the Towe Auto Museum, is a spacious 72,000 square foot museum, home to over 150 vehicles of various makes and models, ranging from the early 1900s to alternative power vehicles of the future. The Museum's mission is to educate and entertain while preserving and promoting the automobile and its influence on our lives. The Museum is open daily from 10am to 6pm, taking the last admission at 5pm and stays open until 9pm every third Thursday.

**Editor's Note:** Media interested in developing special editorial content for this exhibit can contact Kaela Nelson to arrange interviews and photo opportunities.